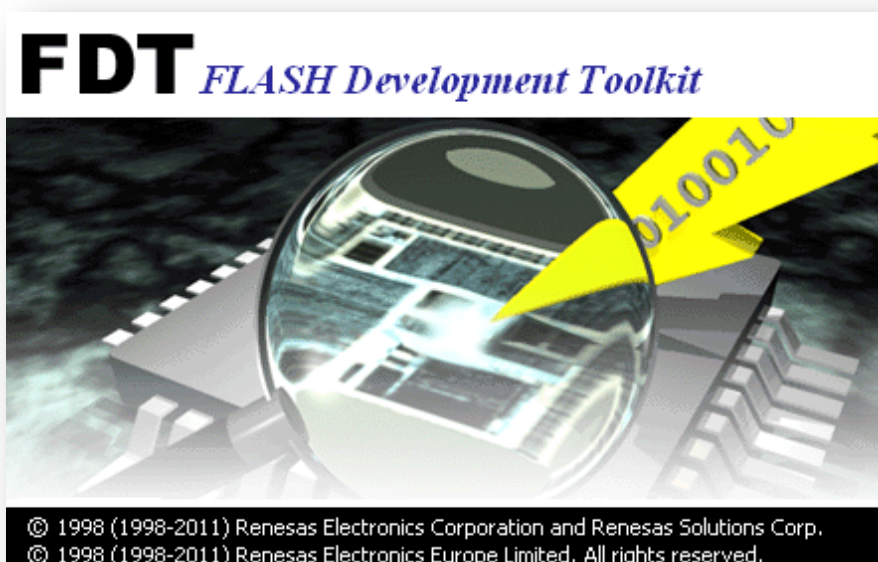


SERIES P40T

Additional Description:

Quick Guide for FDT Basic Tool and Backup Tool



Publisher ELGO Electronic GmbH & Co. KG
Carl-Benz-Straße 1
DE-78239 Rielasingen

Technical Support  +49 (0) 7731 9339 - 0
 +49 (0) 7731 2 88 03
 info@elgo.de

Document- No. 799000683

Document - Name P40T-FDT-Backuptool-AI-E_02-20

Document- Revision Rev. 2

Issue Date 2020-01-08

Copyright © 2020, ELGO Electronic GmbH & CO. KG

1 Contents

1 Contents 3

2 How to install the FDT Software 4

3 How to install the Backup-Tool 9

4 Backup of Controller Data (P40T-series)..... 12

5 Flash controller software of P40T-series 13

6 First use of FDT..... 14

7 Download a “.mot- File”..... 19

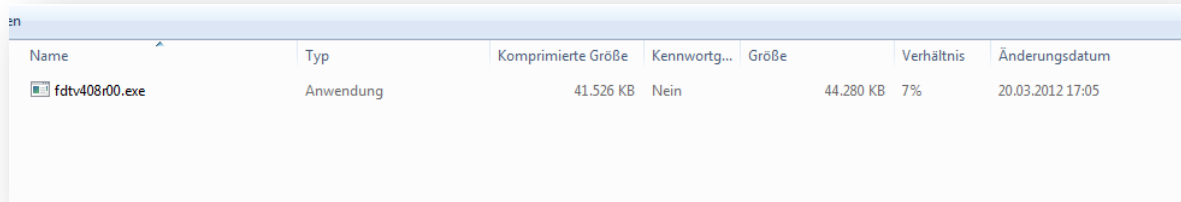
8 Programming Cable / Adapter Cable 22

2 How to install the FDT Software

The Flash Programmer software tool as well as the corresponding documentation is available on <https://www.renesas.com>. After your registration the software is available for download.

Download the [Evaluation Software] Flash Development Toolkit V.4.09 Release 03 on <https://www.renesas.com/us/en/software/D3017335.html>.

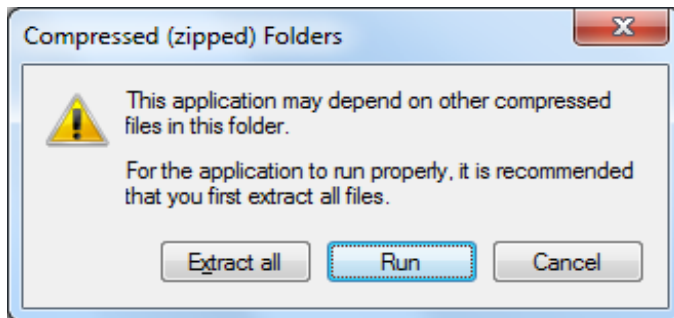
Open the corresponding download folder and you will find the .exe file:



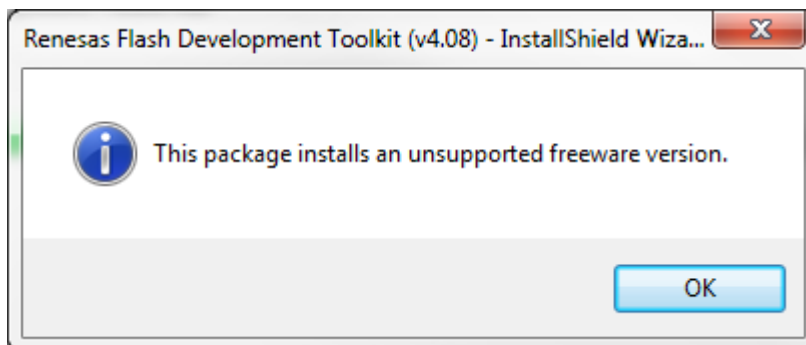
Name	Typ	Komprimierte Größe	Kennwort...	Größe	Verhältnis	Änderungsdatum
fdtv408r00.exe	Anwendung	41.526 KB	Nein	44.280 KB	7%	20.03.2012 17:05

Double click the .exe file.

Select (perform)

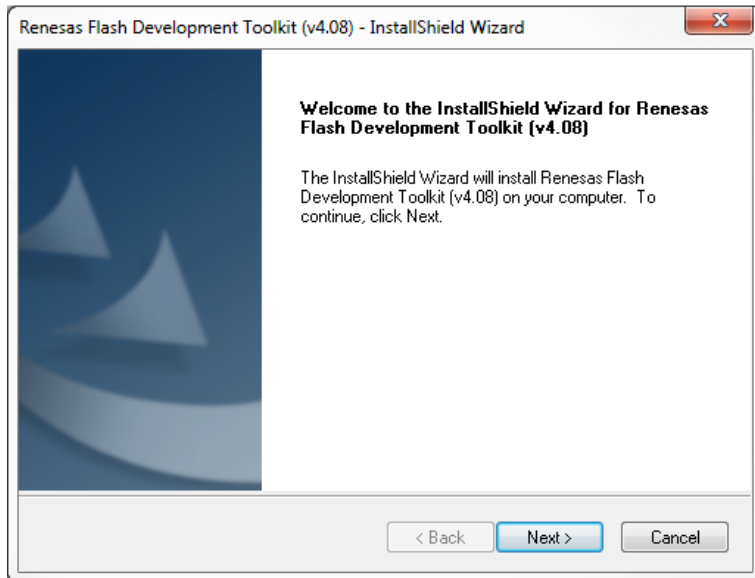


Select



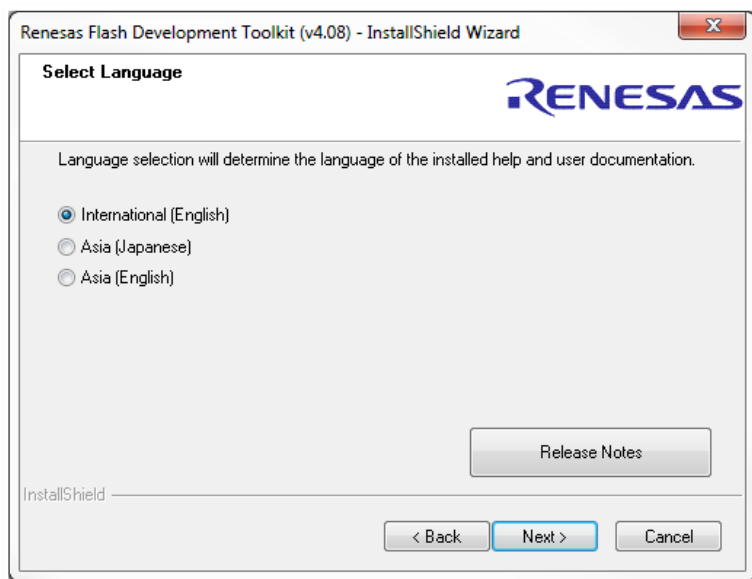
Select


Next >

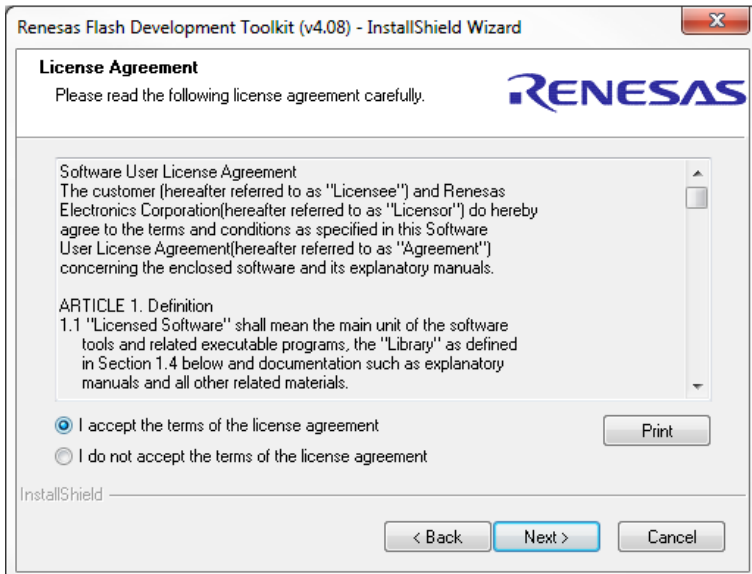


Choose the language for the installation and click

Next >

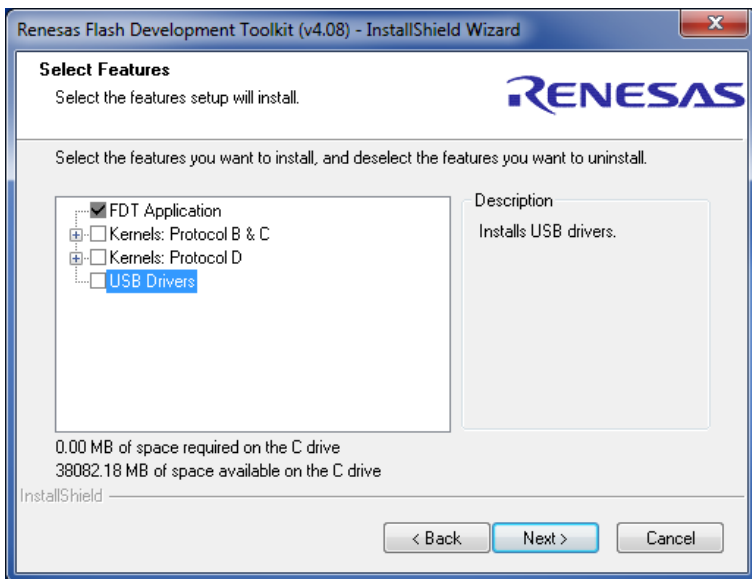


Accept the terms of license agreement and click 

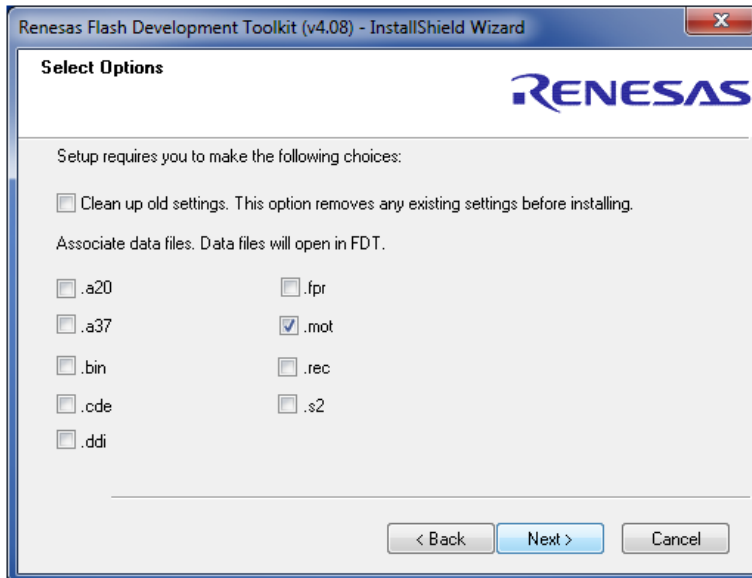


Select only the FDT Application USB Drivers as in the picture below.

Then click 

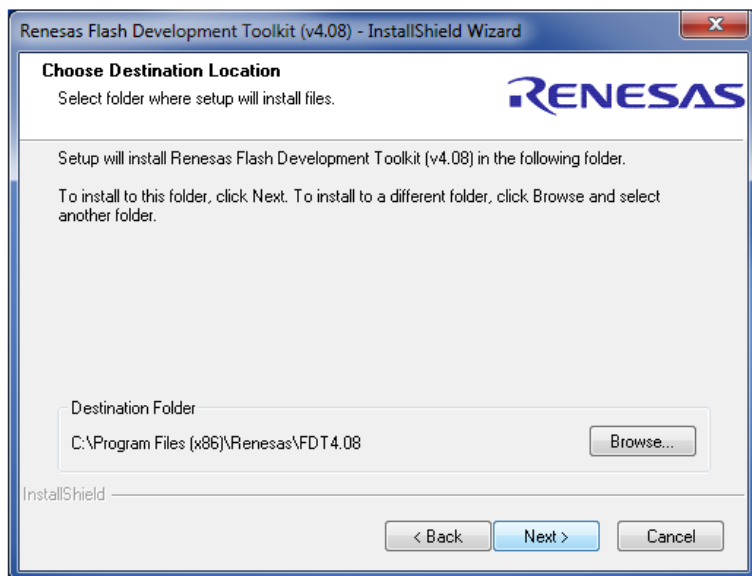


Click  again

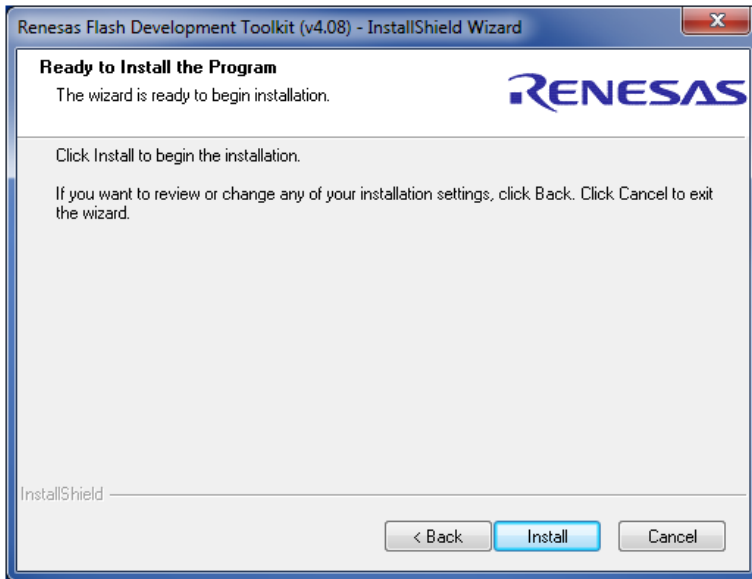


Choose the part of destination with the Browser Button.

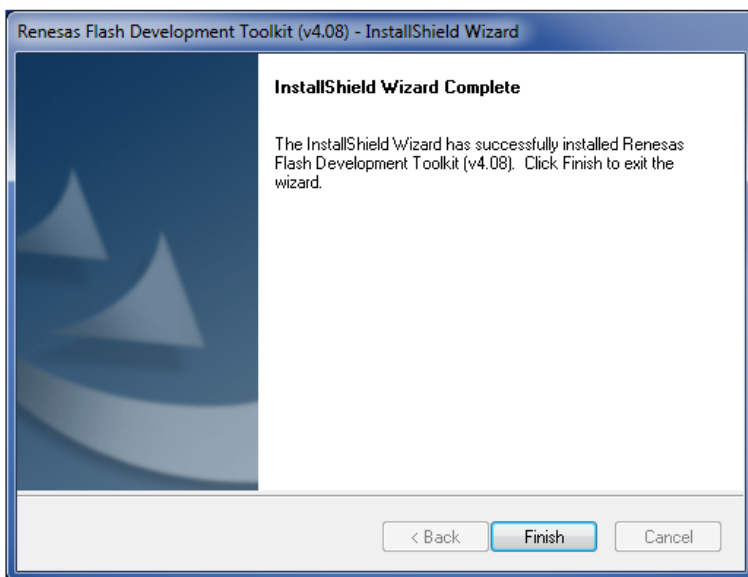
Then click 



Select

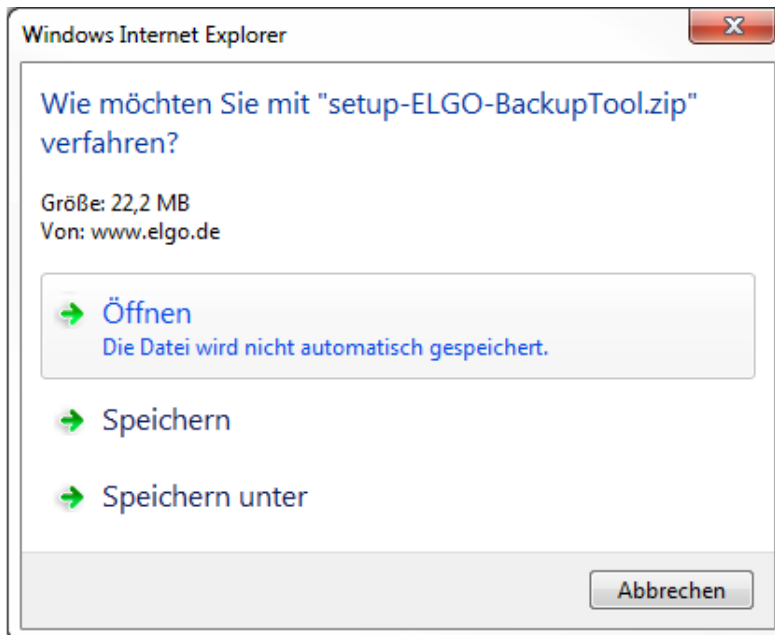


After installing click

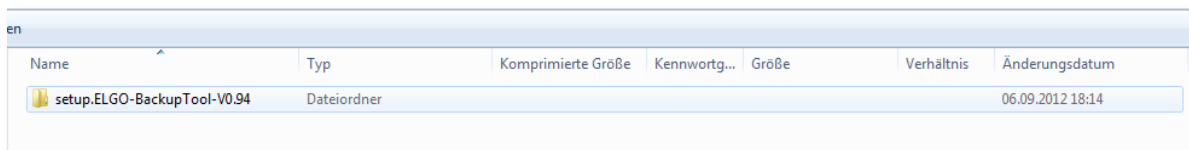


3 How to install the Backup-Tool

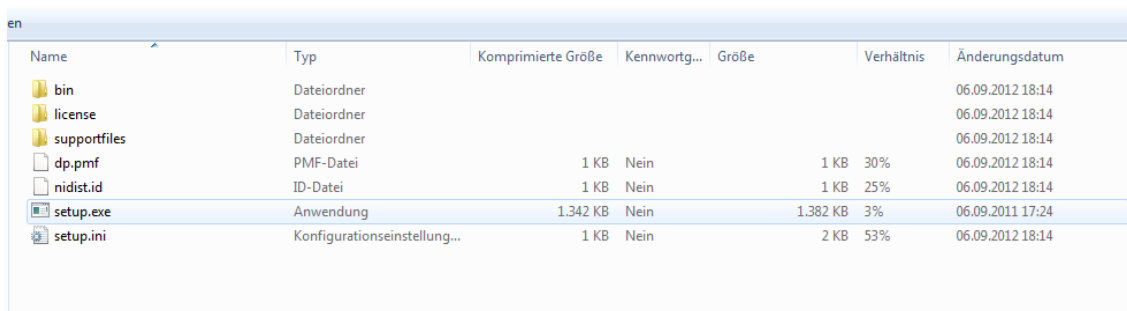
Chose "Open" → the file will be saved automatically:




The folder will be saved on your hardware:

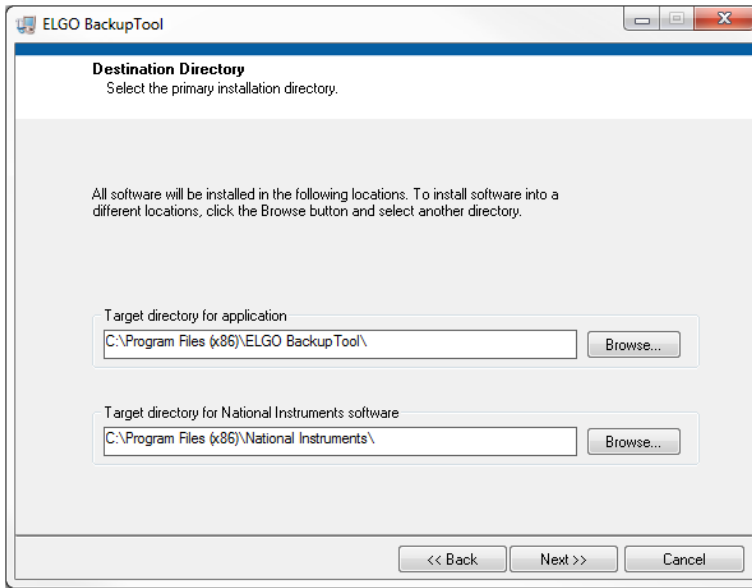


Open the folder and you will find the .exe file:

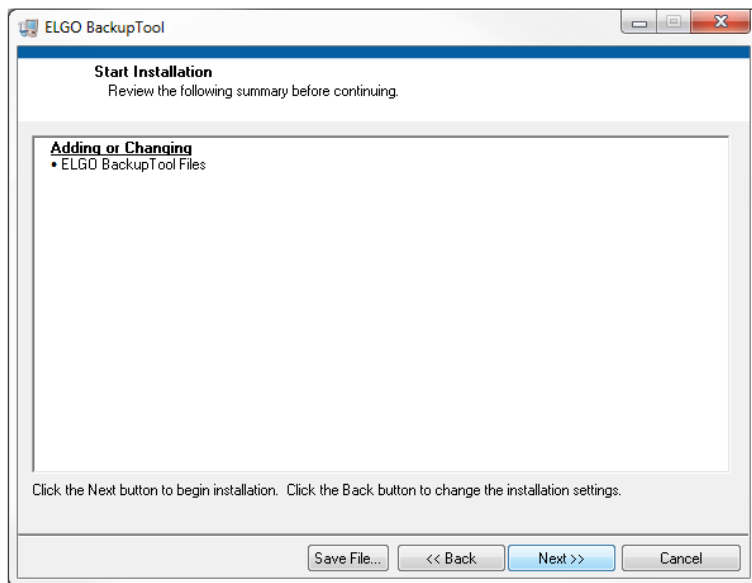


Make a double click on the .exe file.

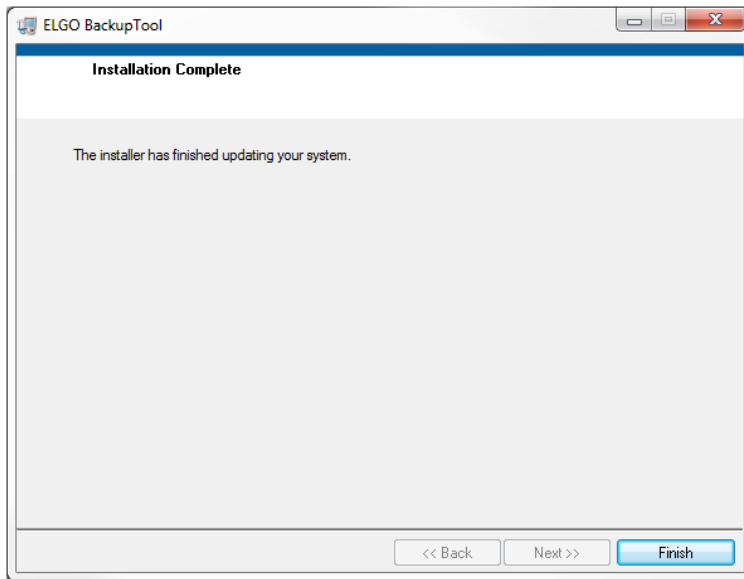
Select the locations and click 



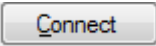
Click  to start the installation.

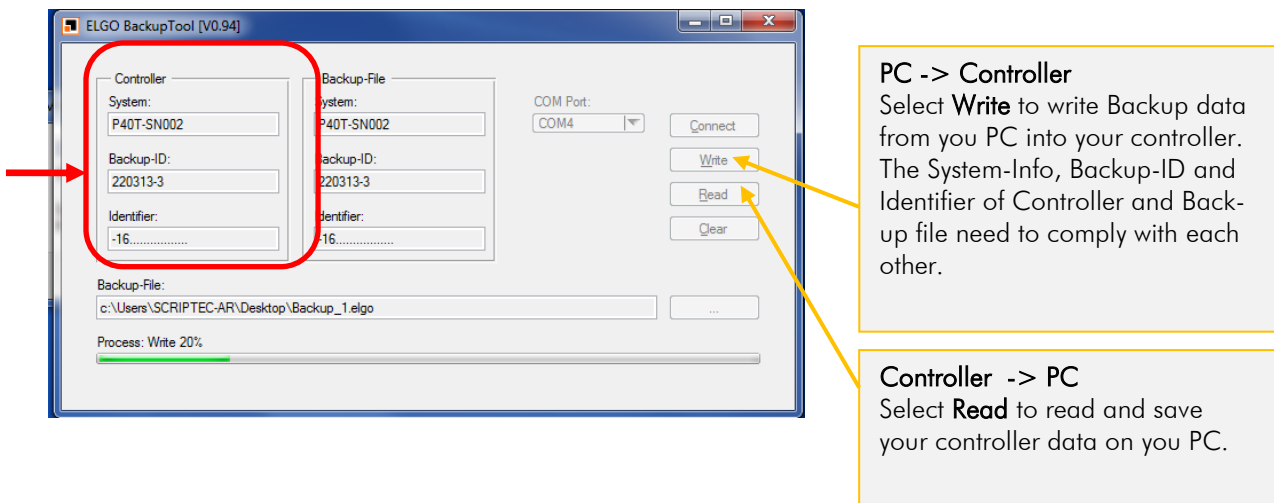


After complete installation click



4 Backup of Controller Data (P40T-series)

1. Open the installed ELGO Backup Tool
2. Connect serial interface of the PC with the S12 (PC-Interface) of your controller by using the programming cable (programming cable / adapter cable see chapter 8). **Do not switch** the little slide switch next to S12 (PC-Interface) - this is only necessary if you want to download software.
3. Activate the serial PC interface in the service menu of your controller (password requested).
4. Click on . After successful connection the backup Info's are displayed in the gap of the controller.
5. Select **Read** or **Write** to save or load controller data.



5 Flash controller software of P40T-series

Precondition:

- Backup of controller data (Parameters and software) must be done first because depending on used Update controller data and software may become overwritten!
- Flash Tool Software must be downloaded.

**NOTE!**

Do never switch the little slide switch (flash switch) next to S12 (PC-Interface) during operation (under tension).

1. Disconnect P40T-series from supply voltage.
2. Switch little slide switch next to S12 (PC-Interface).
3. Connect serial interface of the PC with the S12 (PC-Interface) of the P40T-series controller by using the programming cable (programming cable / adapter cable see chapter 8).

**NOTE!**

Depending on P40T-series-variation do not confuse S12 with MCC1/MCC2!

4. Connect P40T-series with supply voltage.
5. Start FDT (Flash Tool).
6. If you use the FDT for the first time make the configuration according to chapter 6 "First use of FTP" of this documentation.
7. Flash controller software.
8. After flashing: Disconnect P40T-series from FTP by using the Button "Disconnection" and choose in the popup window "do nothing" and "OK".
9. Disconnect P40T-series from supply voltage.
10. Remove the programming cable.
11. Switch back little slide switch next to S12 (PC-Interface).

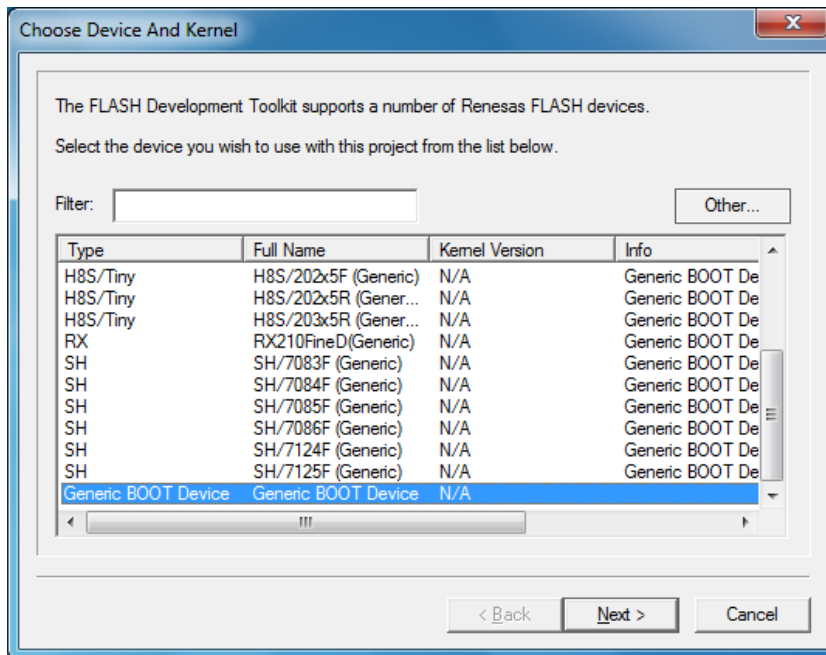
6 First use of FDT


You are going to find to versions of FDT in the "Renesas-Folder".

Use the FDT Basic version!

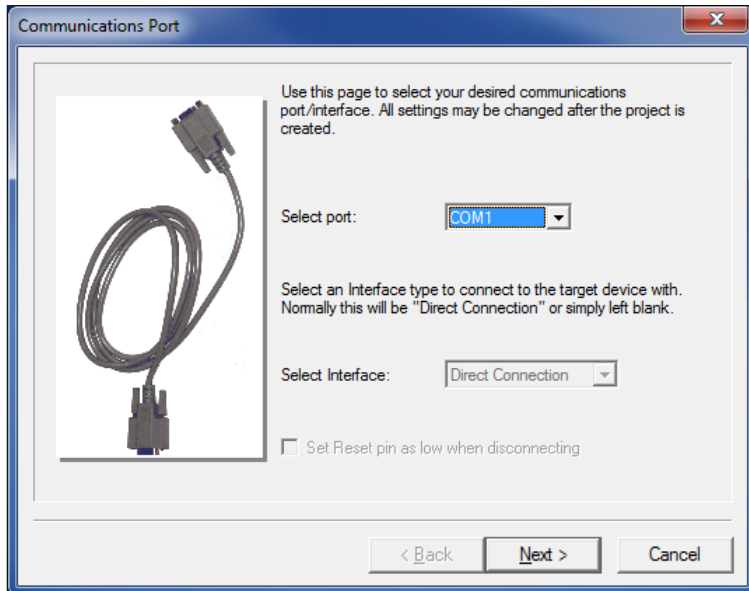
In the first dialog choose **Generic BOOT Device**

Then click 



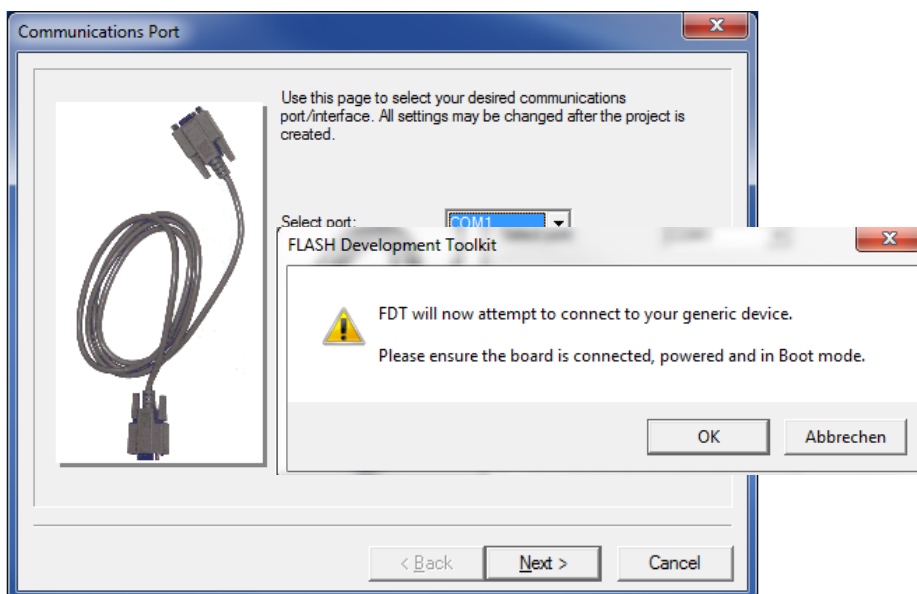
Choose the COM-PORT of your serial interface and click 

NOTE: The COM port must be set to a maximum COM9. Otherwise, the connection is not established to the controller, and it appears no error message.

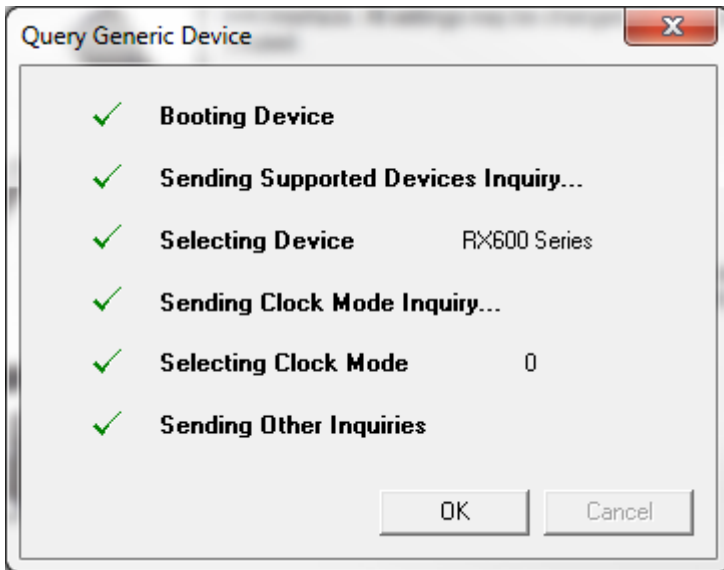
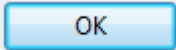


Be sure that the control is switched on and connected to your serial port as described in **Chapter 5 → Step 1 ... 4** of this manual.

Click 

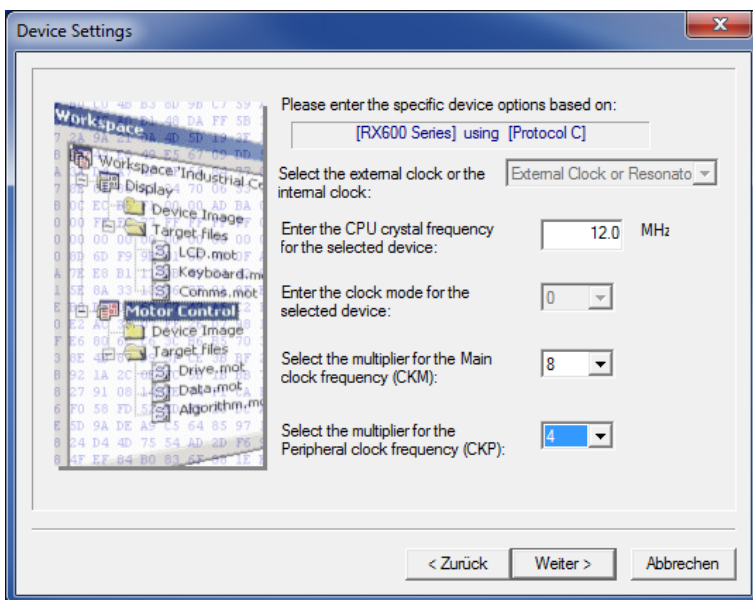


If you have done everything correctly it should look like this. Press



In this dialog please enter the values for P40T-series as shown below.

	P40T
Processor frequency [MHz]	12.00
Multiplier for the main clock	8
Multiplier for the Peripheral clock	4

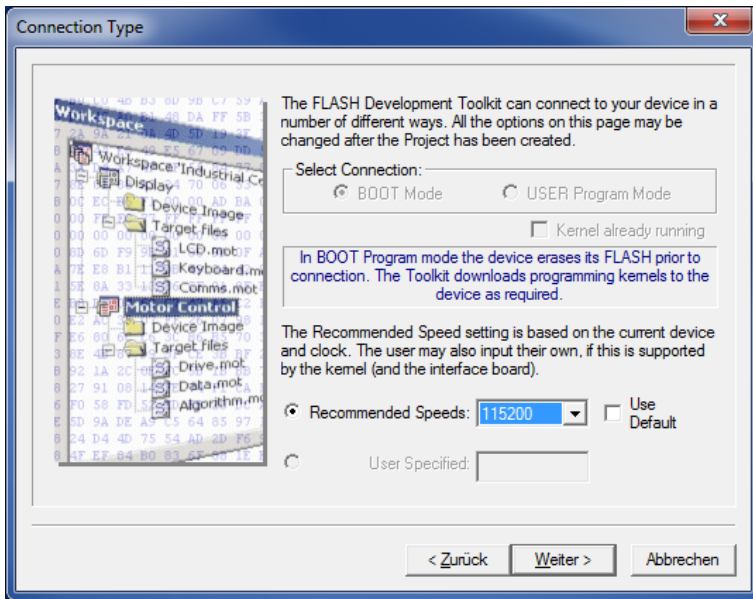


Then click



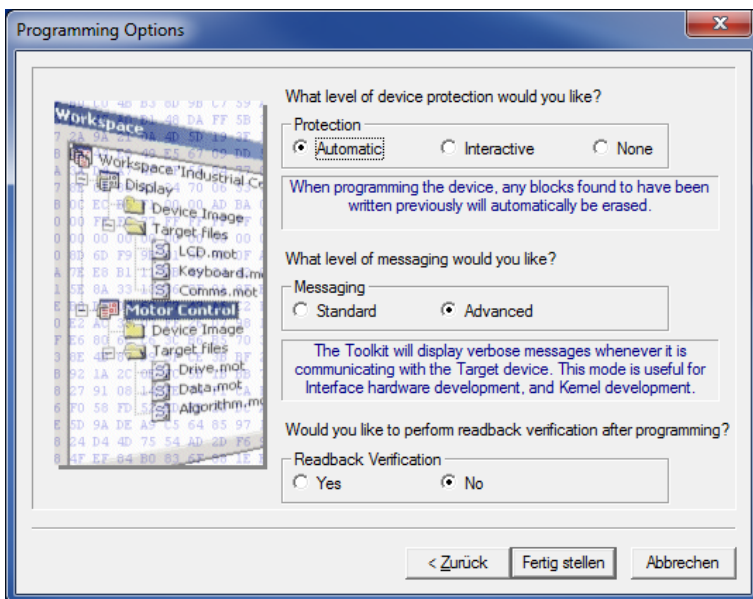
Change the Baud rate to 115200 and click

Next >

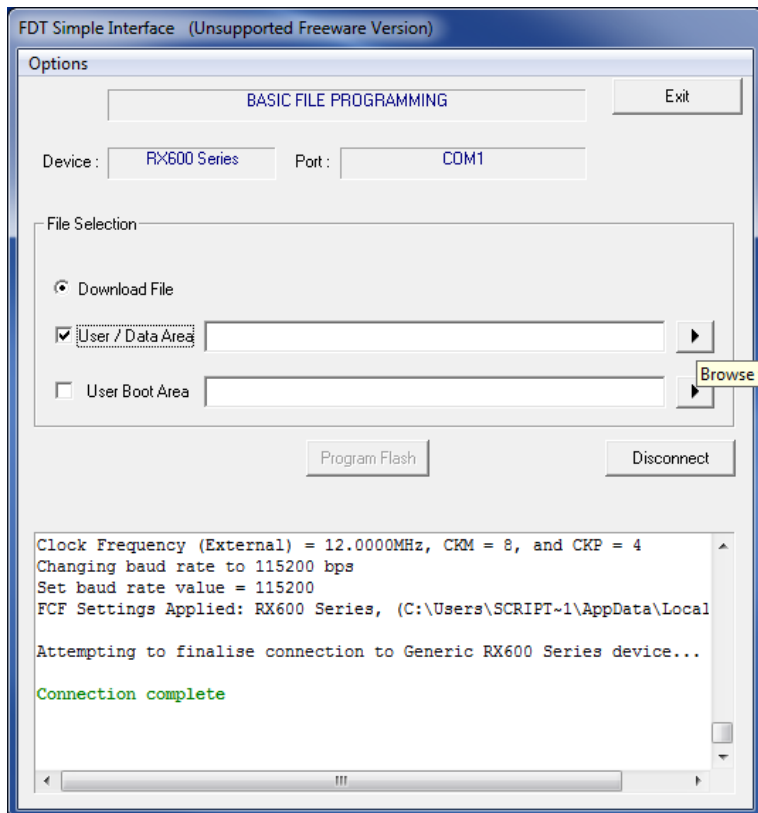


Do not change anything in this dialog and click

Finish

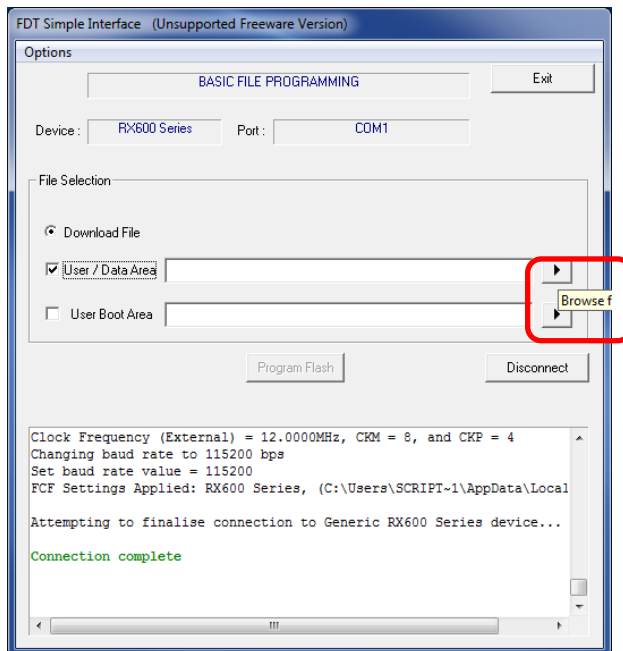


Now you should see the FDT Dialog like in the picture below.
The installation is complete.



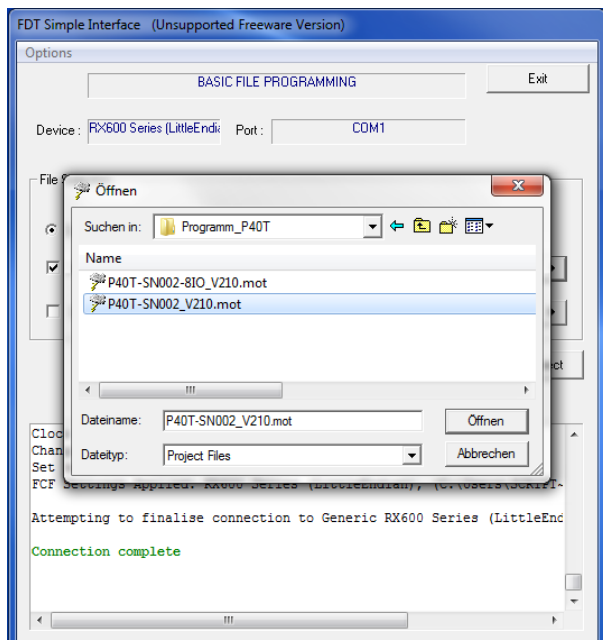
7 Download a ".mot- File"

Click on "Browse" for choosing a file.

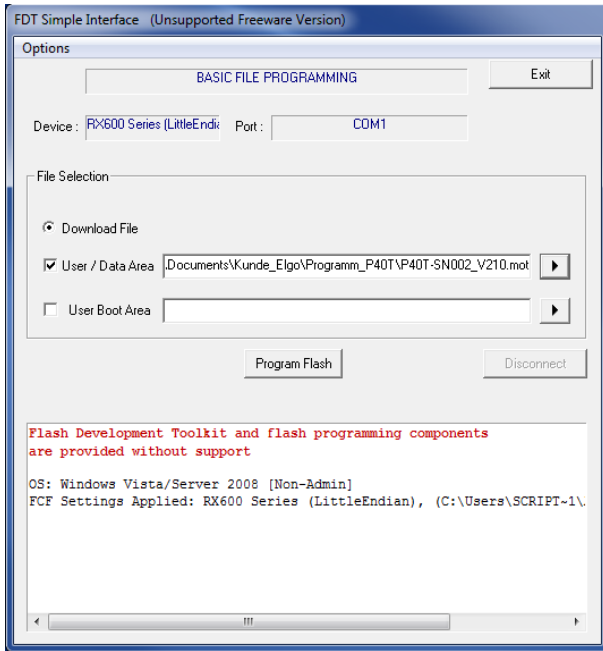


Choose the latest version. Probably you will get the ".mot-file" from our service department by Email. In this case you have to choose the directory in which you have saved the file.

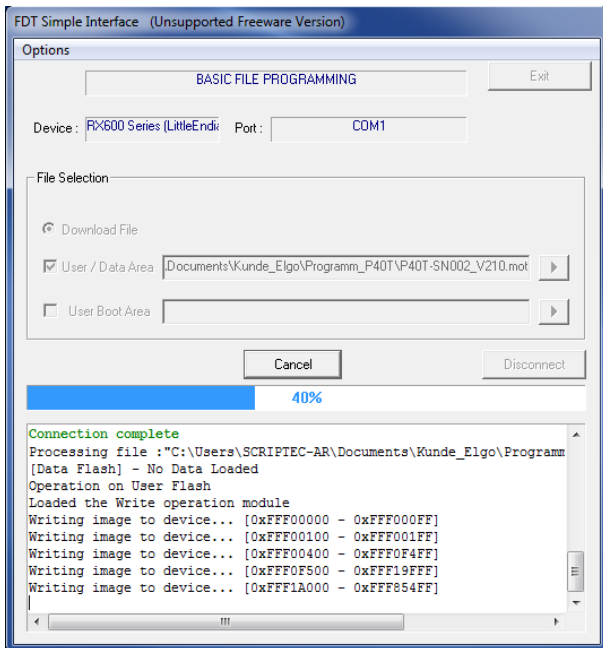
After that click **Open**



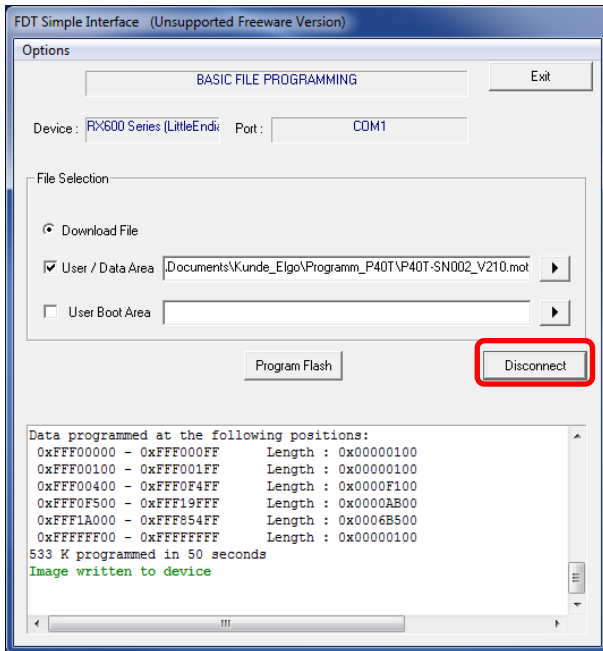
After choosing the file click on **Program Flash**



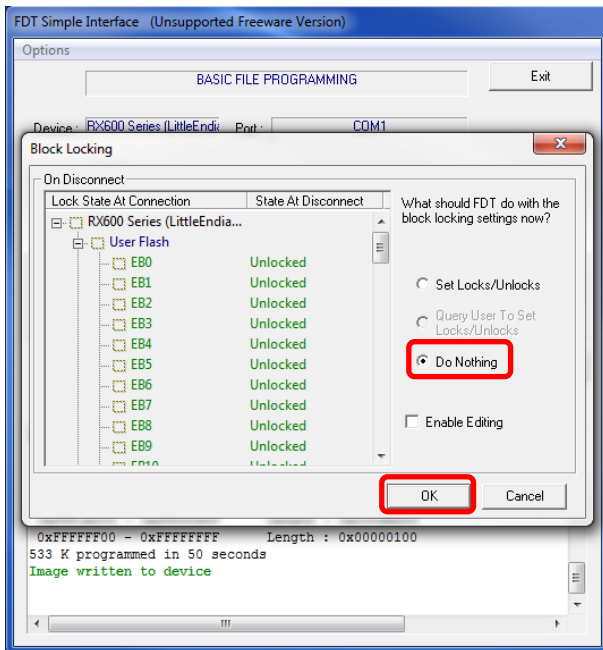
The program will be flashed.



Now you have flashed the program!
Press **Disconnect**



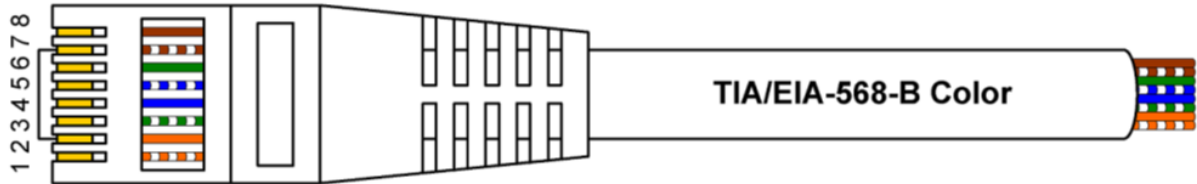
Choose "Do nothing" and "OK" in the popup window



- Disconnect P40T-series from supply voltage.
- Remove the programming cable.
- Switch back little slide switch next to S12 (PC-Interface).

8 Programming Cable / Adapter Cable

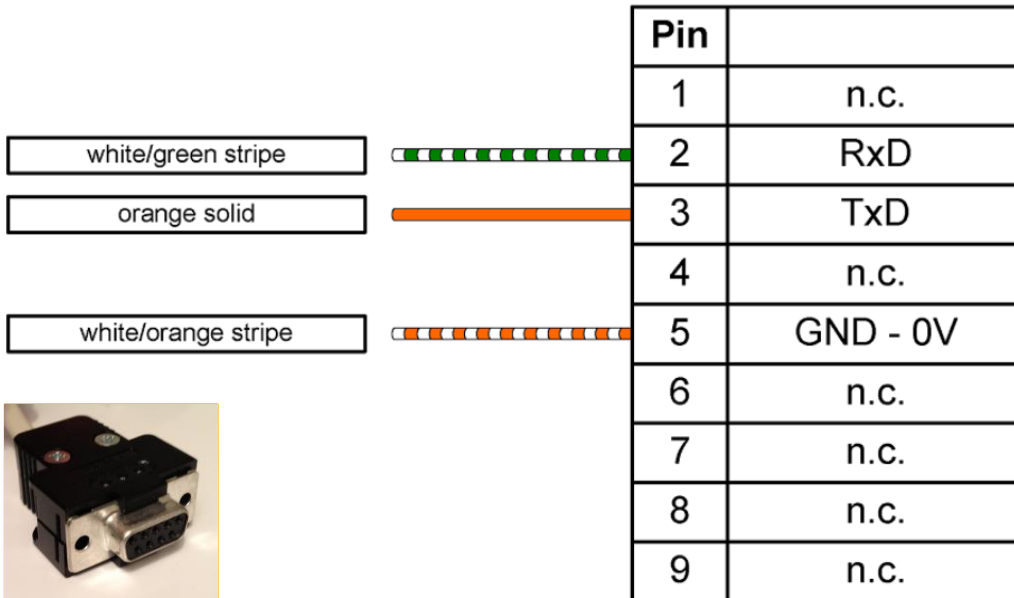
P40-series



1 2 3 4 5 6 7 8	Pin	TIA/EIA-568-B Color	
	1	white/orange stripe	GND - 0V
	2	orange solid	RxD
	3	white/green stripe	TxD
	4	blue solid	n.c.
	5	white/blue stripe	n.c.
	6	green/solid	n.c.
	7	white/brown stripe	n.c.
	8	brown solid	n.c.

PC (extern)

D-SUB 9 polig (female)



Notes:

Notes:

