

IZ15E-001

IZ15E-100

- **MEASURE**
- **INDICATE**
- **COMMUNICATE**



Battery-powered incremental position indicator

Series IZ15E Battery-powered incremental position indicator

General: IZ15E is used in combination with a magnetic sensor which is connected to the display with a drag-chain suitable cable (up to 2 m length). It is an autonomous incremental measuring system and display. Like all the position indicators of the IZ-series the IZ15E features extensive programming options (e.g.. degree-display, Inch-mode with fraction display) and can easily be adapted to the respective requirements.

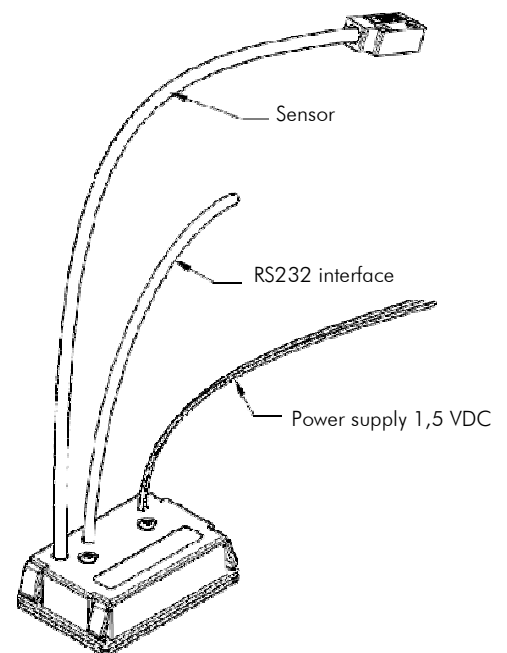
IZ15E is also available with plug-in battery case and can be operated by a power supply unit in this option. Via the interface RS232 the IZ15E communicates with a superior controller/PC (special number: 100).

The new Snap-In Housing allows easy mounting in the defined panel cut out on the front side.

Applications: Manual sleds, guiding and stop systems where no power supply is available.

Features:

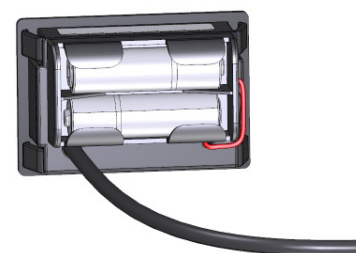
- 7-digit LCD-display
- Sign, battery status, units and "°"-symbol
- Configurable display modes: mm /m/inch with fraction display
- Adjustable counting direction
- Adjustable decimal point and multiplication factor
- Keylock
- Adjustable reference value
- 2 external outputs
- Simple assembly via Snap-In Housing (compatible with Z15)
- 3 adjustable tool-offsets
- Switch-over between incremental and absolute measuring
- Supply by external battery case (eg. 1 x C [1,5 V] or 2 x C [3 V])
- SN100 interface RS232 via additional open cable outlet



Our different variants:



Cable outlet for external battery compartment, an integral sensor cable outlet



Open battery compartment on the backside, integral sensor cable outlet

Technical specifications:

Display	LCD-display 7 decades (digit high 9 mm) with sign, battery status and units
Units	mm, m, Inch or „ ^o “-symbol
Perspective	12 o'clock
Keyboard	Foil with softkeys
Measuring principle	magnetical
Measurement	Linear or rotative
Power supply	Battery (1,5 V or 3 V)
Power consumption (with measuring system)	< 1 mA at 1,5 V
Operation speed	Max. 4 m/s
Operating temperature	0... +50 °C
Storage temperature	-20... +80 °C
Housing	Norm panel housing, plastic, black
Housing dimensions	W x H x D = 92 x 48 x 23 mm
Install depth with plug	30 mm (incl. cable) -> depending on version
Panel cut out	W x H = 68 x 45 mm
Protection class	IP54
Magnetic sensor MS20.25	
Sensor cable length	0,1 m... 2,0 m
Resolution	0,1 mm... 0,01 mm
Operating temperature	0... +50 °C
Storage temperature	-20... +80 °C
Housing	Zinc die cast
Mounting position	User-defined
Min. bending radius	Min. 60 mm
Distance sensor/tape	Max. 1,0 mm (without masking tape)
Protection class	IP67

Order reference:

For orders, please use the following order code:

IZ15E - $\overline{\text{A}} \overline{\text{A}} \overline{\text{A}} - \overline{\text{B}} - \overline{\text{C}} \overline{\text{C}} \cdot \overline{\text{C}} - \overline{\text{D}}$

A SN-Number

001 Standard

100 RS232-via additional open cable outlet

B Power supply

3 Cable outlet for external battery case (1,5 V/ 3 V)

4 Open battery case on backside
(2 x Typ 2AA / LR06 / Mignon)

Sensor cable length

C Example: 01.0 = 1,0 Meter

Max. length 2,0 Meter

Option

D 0 fixed cable outlet (standard)

Example:

IZ15E - $\underline{\underline{001}} - \underline{\underline{3}} - \underline{\underline{01.0}} - \underline{\underline{0}}$
 $\text{A A A} - \text{B} - \text{C C} \cdot \text{C} - \text{D}$

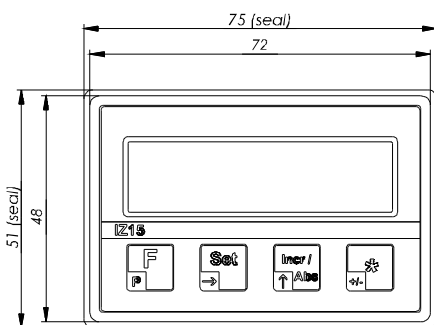
IZ15E ELGO standard, with a cable outlet for a external battery case (1,5 V/ 3 V), 1,0 m sensor cable length and with a fixed cable outlet.

Your order:

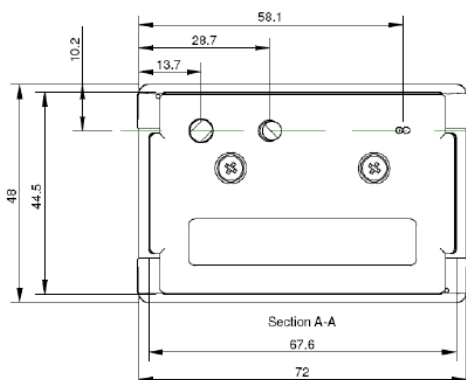
IZ15E - $\overline{\text{A}} \overline{\text{A}} \overline{\text{A}} - \overline{\text{B}} - \overline{\text{C}} \overline{\text{C}} \cdot \overline{\text{C}} - \overline{\text{D}}$

Dimensions:

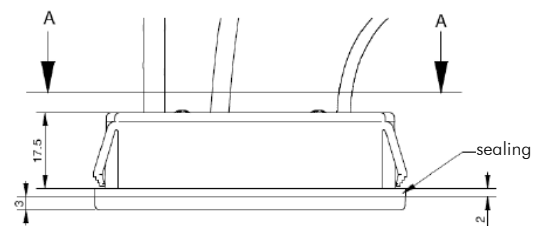
Front view



Back view



Side view



Accessories:

MS20.25	Magnetic sensor for IZ15E
Battery case 1 x C Mounting (710000131) <u>or</u> 1 x C Open (710000132)	Battery compartment incl. battery holder, battery and cable lug Battery holder, battery and lug
MB20-25-10-1-R	Magnetic tape for IZ15E
Magnetic tape end cap 10 mm - Set	2 end caps (10 mm) and 2 M3 screws; additional fixation in the radial and linear area, as well as a protection of the magnetic tape ends. <u>Order No. 731031002</u>
Magnetic tape end cap 10 mm	1 end cap (10 mm) <u>Order No. 731031000</u>
FW-2060	Guiding wagon for sensor
FS-XXXX	Aluminum profile rail with 2 slots for fixation of a 10 mm and 20 mm magnetic tape. Without tape! (XXXX = length in mm)

