

Series Z20



Programmable Mini Position Indicator

Z20 Programmable Mini Position Indicator

General: This small, compact unit has an 8 mm high, red LED display and provides a convenient, precise and easily readable indication of position. Using the dust-tight keypad the display can be reset or preset a datum value. The standard unit evaluates, incremental square waves (Channels A,B and Z) of optical rotary encoders and also the magnetic ELGO measuring systems LMIX, EMIX, MIX, PMIX and FMIX (if ordered with measuring system index M or N). See "Type designation"

Special version Z20-005 The special version Z20-005 is equipped with a connector to the magnetic sensor ELGO-MS20.60. The translator circuit is already integrated in the unit. For correct measuring, a magnetic tape with 5 mm pole width is necessary (e.g. ELGO MB20.50).

Product features:

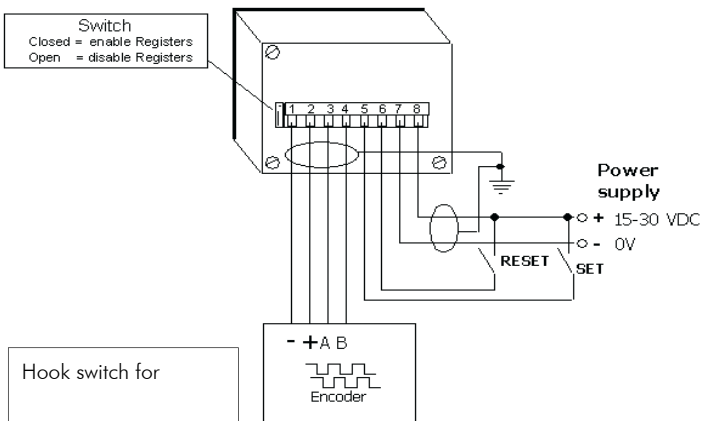
- Power down memory
- Datum value
- Multi edge triggering
- Selectable decimal point
- Programmable scaling factor
- Sign for counting direction
- Digital brightness control
- Up/Down- or Differential counting mode
- Connection for magnetic sensor available (Z20-005)



Many different incremental measuring systems can be connected to Z20.

Levels and measuring systems are encoded by different letters or figures in the type designation and can be ordered as desired.

Connections:



Rotary encoder
(Index 0 or 1)

ELGO LMIX/EMIX2
(Index M or N)

ELGO PMIX
(Index M or N)

Magnet sensor MS20.60
(Z20-SN005)

ELGO FMIX
(Index M or N)

ELGO LMIX/EMIX3
(Index M or N)

Technical specifications:

Supply voltage	15 - 30 VDC (not stabilized)
Power consumption:	1 VA
Counting frequency:	20 KHz = 2 m/s, resolution 0.1 mm (more on request) At SN005 = 2,5 m/s, resolution 0.01 mm
Display	8 mm high red LED, 5 digits with +/- sign
Input signals:	Square waves with 90° phase offset, Level: 12 V
External inputs:	potential free contacts (max. 10 Hz)
Memory:	in power down status all parameters and the actual value will be stored in an EE-prom
Operating temperature	0...50 °C
Housing	panel housing (plastic, black)
Protection class	IP40 (installed state)
Dimensions of housing:	W x H = 72 x 48 mm
Panel cut out:	W x H = 69 x 45 mm
Install depth:	77 mm inclusive connections

Order reference:

For orders, please use the following order code:

Z20 - - -
 A A A - B B B - C

A Version

- 000 ELGO standard
- 001 First special version
- 005 with magnetic sensor

B Supply

- 024 24 VDC

C Signal input

- 0 A, B
- M A, B Adjustment counting
- 9 Magnetic sensor connection MS20.60 (nur SN005)

For Example:

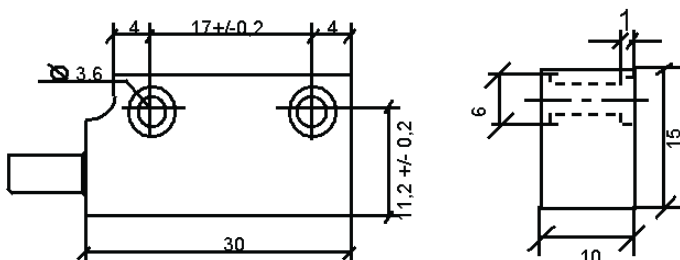
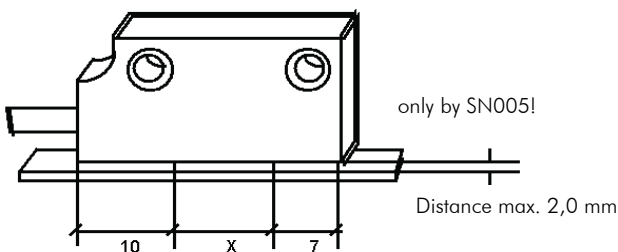
Z20 - 000 - 024 - 0
 A A A - B B B - C

ELGO Standard Z20 with 24V DC supply and A, B Signal input.

Your order:

Z20 - - -
 A A A - B B B - C

Dimensions:



Accessories

MB20.50	Magnetic tape with 5 mm pole width
Magnetic tape end cap 10 mm - Set	2 end caps (10 mm) and 2 M3 screws; additional fixation in the radial and linear area, as well as a protection of the magnetic tape ends
Magnetic tape end cap 10 mm	1 end cap (10 mm)
NG20.0	External power pack

