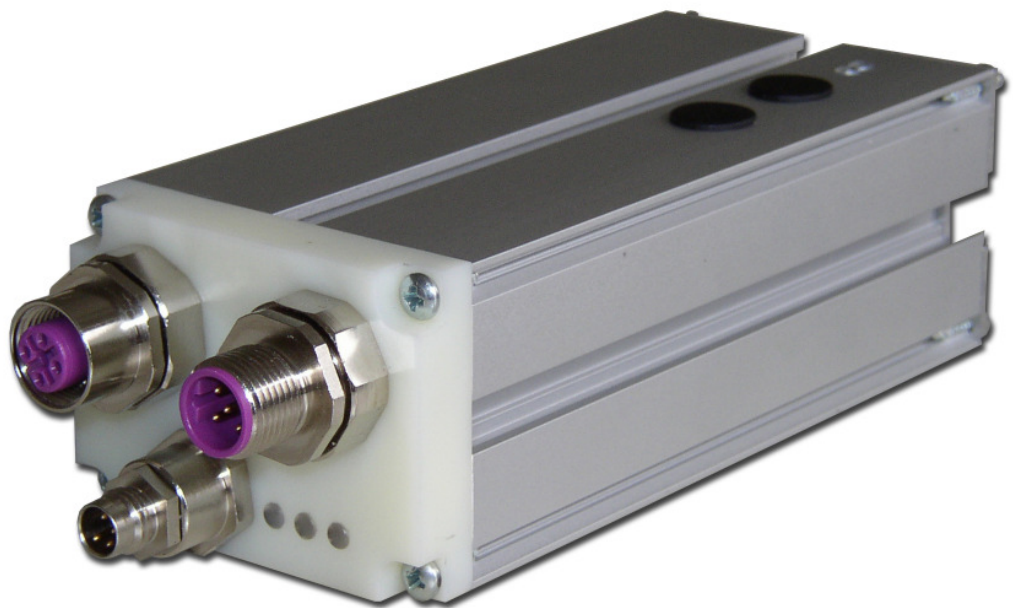


PN01



Product features

- Universal applicable
- compatible to old ELGO products
- Profibus

SSI- Profibus Converter

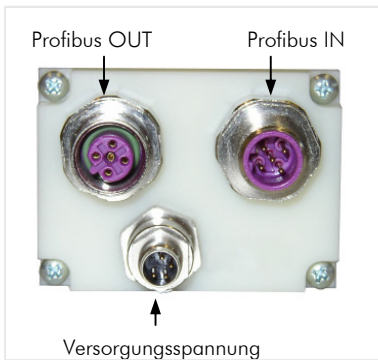
Following parameters giving:

Transmission: RS485 two-wire line, conduit length: 1200m with 9,6kBaud
 200m with 1,5Mbaud
 100m with 12Mbaud

Baud rate: 9,6kBaud to 12Mbaud (automatic recognition), clock rate max. 250 kHz,
 participant: max. 32 per segment (by Repeater on 126 expandable), mono and multi-masters of systems possible

SSI- Interface: With the professional bus - converter should always be the PFB "LOW"!
 By means of at the top side of housing, under a protective plastic film, turning coding-switch present, the data format of the SSI interface between binary and Gray code can be switched.

Supply voltage	19... 27 V DC
Current consumption	Max. 0,2 A
Signal pegel	Depend on interface
Operation temperature	0... +50°C
Storage temperature	0... +70°C
Protection class	IP50: standard version, IP67: Option V
Housing	Aluminium (Al/Mg/Si 0,5)
Dimension (L x B x H)	160 x 55 x 40 mm
Length	Abhängig von Bitrate
Weight	280 g



Profibus IN			Profibus OUT		
Pin	Color	Function	Pin	Color	Function
1		N.C.	1		N.C.
2		Data A	2		Data A
3		N.C.	3		N.C.
4		Data B	4		Data B
5		Shield	5		Shield

Versorgungsspannung			SSI – Schnittstelle		
Pin	Color	Function	Pin	Color	Function
1	Brown	+19 up to +27 VDC	1		0V / GND
2	White	N.C.	2		+ 24 VDC
3	Blue	0V / GND	3		SSI/TX Data -
4	Black	N.C.	4		SSI/TX Data +
			5		SSI/CLK Clock -
			6		SSI/CLK Clock +
			7		N.C.
			8		N.C.

